

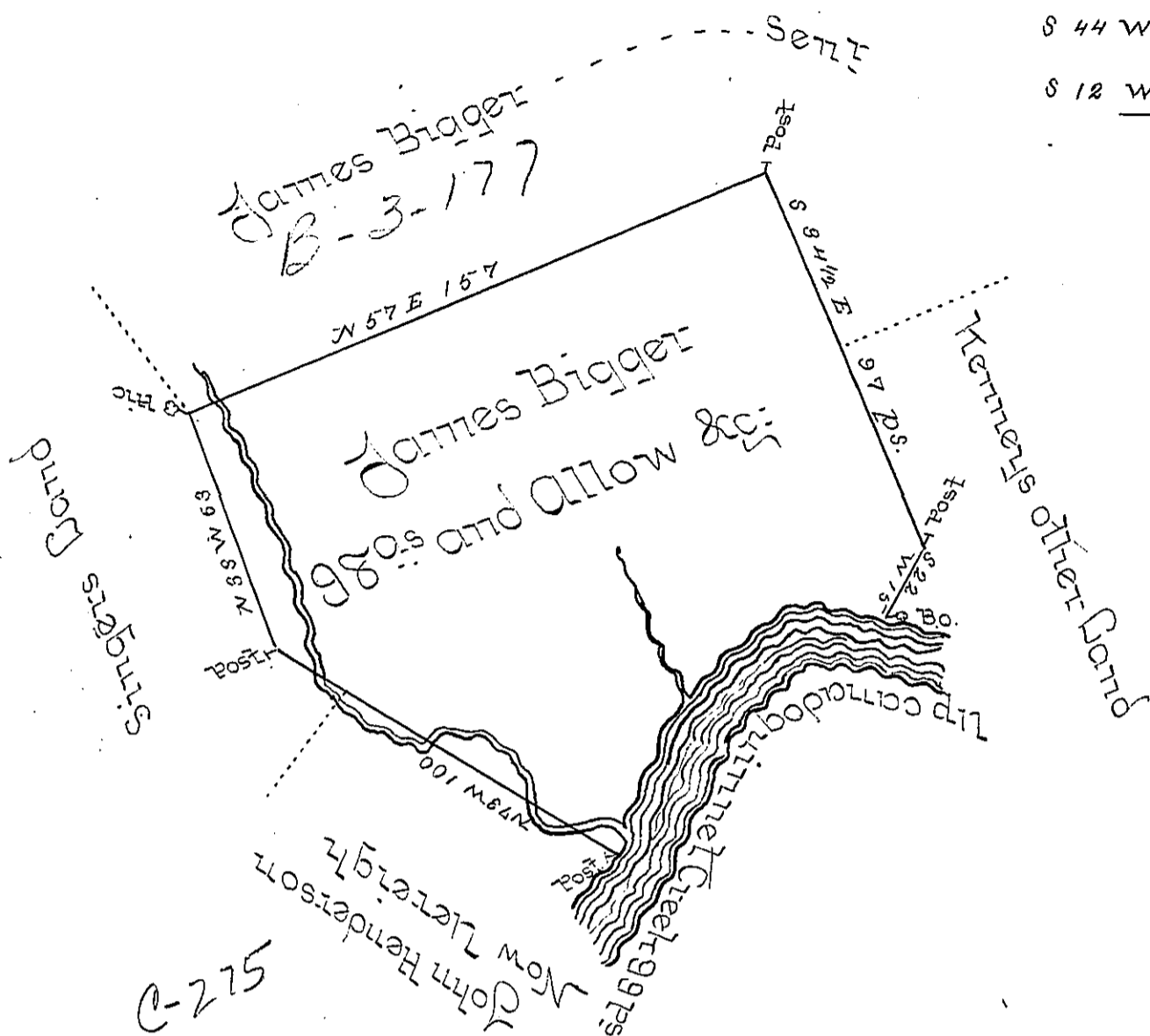
Courses & Distances up Creek  
from the Bo-

S 80 W 19

S 44 W 31

S 12 W 49

Post to Post



The Draught of a tract of Land situate in Middleton Township Cumberland County containing Ninety eight Acres & Allowance of six P Cent for Roads &c originally Surveyed the 10<sup>th</sup> of March 1745/6 on a warrant granted to James Bigger Dated 30<sup>th</sup> of April 1745 & Resurveyed the 2<sup>nd</sup> of April 1802 on an Order from the Board of Property Dated the 27<sup>th</sup> of March 1802 &

To Saml Cochran Esquire }  
 Survey Genl of Pennsylvania }  
 Wm Ramsey D.S.

IN TESTIMONY that the above is a copy of the original remaining on file in the Department of Internal Affairs of Pennsylvania, made conformably to an Act of Assembly approved the 16th day of February, 1833, I have hereunto set my Hand and caused the Seal of said Department to be affixed at Harrisburg, this  
 second day of November 1897

*James W. Patton*  
 Secretary of Internal Affairs.